

Modernization Solutions

ThyssenKrupp Elevator's **HY**power System

ThyssenKrupp Elevator Americas



ThyssenKrupp

Solutions. Results. Exceeding Expectations.







ThyssenKrupp Elevator provides the right solutions to our partners every time. Words like **high performance**, **reliability**, **efficiency**, **compliance**, **technologically advanced** and **superior ride quality**, help define the standards and expectations we set for all of our products and services. HYpower, ThyssenKrupp Elevator's Hydraulic Modernization Solution, is no exception.

HYpower allows building owners to invest in advanced vertical transportation technology and offers an effective approach to bring elevators into compliance with new codes and regulations. The high-performing components of HYpower extend the lifecycle of an elevator, allowing building managers to experience less system down time and fewer repeat service calls—resulting in significant cost savings. Just as importantly, the building tenants enjoy a smoother ride in a clean and secure elevator. Our HYpower Modernization Solution saves time, saves money and produces positive results for all.

Smart Investment. Sustainability. Future Success.

The largest potential for elevator efficiency lies in the energy used to operate it — keeping equipment up-to-date is key to increasing energy efficiency. Our understanding of this impact allows us to encourage and educate our customers on the benefits of Modernization.

SUSTAINABLE MODERNIZATION FACTS:

-  Buildings account for **39%** of the world's energy consumption.
-  Elevators are constructed primarily from steel, with an average recycled content of up to **75%**.
-  Installing new technology in old elevators enhances ride **performance**.
-  When updating an old elevator, **less materials** and resources are used.
-  Modernizations improve and protect the **indoor environmental quality** of your building.
-  ThyssenKrupp Elevator's HYpower components are Made in America, in Middleton, Tennessee.

ThyssenKrupp Elevator affirms our strong commitment to quality and reliability by offering the HYpower System. This latest addition to our Modernization Solution line further demonstrates our dedication to sustainability and our position as your trusted partner. Our Modernization Solutions create long-term value for our customers and stakeholders. ThyssenKrupp Elevator strives to use all our resources wisely and efficiently while developing sustainable products like HYpower. An investment in a better, high-performing hydraulic system is an investment in the future of your building and the communities where you work, live and thrive.

A High-Performance Hydraulic System.

THE SUM IS GREATER THAN THE PARTS.

ThyssenKrupp Elevator manufactures more low-rise elevators than any other company in North America. We are confident serving as a trusted partner and an industry expert in this arena. Our HYpower Modernization Solution is comprised of more than 30 different features, each of which is an investment in quality. HYpower allows key stakeholders to see the big picture. By investing in a more complete Modernization option, instead of replacing parts and components one at a time, clients see immediate improvement in elevator performance and reliability after completion. In addition, HYpower offers a microprocessor-based system, updated signal fixtures and door operator. Most importantly, our HYpower components work together to improve the operation of a hydraulic system throughout its life cycle.

FOLD DOWN THE FLAP TO SEE THE BIG PICTURE.

Improved Capabilities. Increased Reliability. Accountability.



1 TAC32® Controller

Microprocessor-based system with diagnostic capabilities and easier troubleshooting than other control systems.



Non-Proprietary User-Interface Tools

User-friendly tool that allows unrestricted access for on-board adjusting and troubleshooting.



Battery Lowering Unit

Provides supplemental power to the controller in case of an outage.



Solid State Starter

Energy efficient motor starter that minimizes power surges with smooth, quiet, and reliable operation.



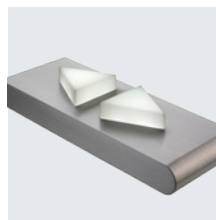
Tape Selector System

Teflon-coated, perforated tape runs the length of the hoistway and digitally communicates the elevators location, providing a safe and level landing for passengers when boarding and exiting.



3 Door Operator

Typically, the door operator causes the most trouble in a hydraulic system. Our on-board diagnostic service tool results in consistent operations and fewer shutdowns and service callbacks. A Linear Door Operator is also available.



4 New Fusion Fixtures

Stainless steel fixture line is in full compliance with U.S. and Canadian Fire Service Codes. Includes the car operating panel, hall fixtures and car riding lanterns that improve the elevator appearance and functionality. They are also easy to install, and do not disrupt or damage the walls.



2 Power Unit (optional)

Power unit replacements enhance most hydraulic applications. This key components in the hydraulic system, helps reduce noise and vibration during operation—allowing for a quiet and smooth ride. Furthermore, the precise operation of the units increases leveling accuracy and improves passenger safety.



5 Wiring Package

Advanced traveling cable and hoistway wiring system support safety and improve installation time, capacity and speed. The package also reduces the amount of wiring required, decreasing the use of valuable resources, like copper.

Control System

- TAC32 Controller
- Microprocessor-Based
- Simplex or Group Operations
- On-Board Diagnostics
- Solid State Starter
- Battery Lowering
- Tenant Security
- Front Openings Only
- Up to 6 Stops
- VISTA® Remote Monitoring System
- Local Code Compliance
- Limit Switches (If Required by Local Code)
- Leveling Accuracy: +/- 1/2 inch (13 mm)

- Power Supply: 200-208V, 220-240V, 460-480V, 575-600V, 50/60 Hz, AC
- Speeds** Up to 200 fpm (1 m/s)
- Capacity** 1200 to 5000 lbs.
- Travel** Up to 60 feet (18m)
- Tape Selector**
 - Elevator Position Digitally Communicated to TAC32 Controller
 - Strong Spring Tensioning Device

Door Operator

- Closed-Loop Encoder Feedback
- On-Board Diagnostics
- MicroLight Electronic Door Detector

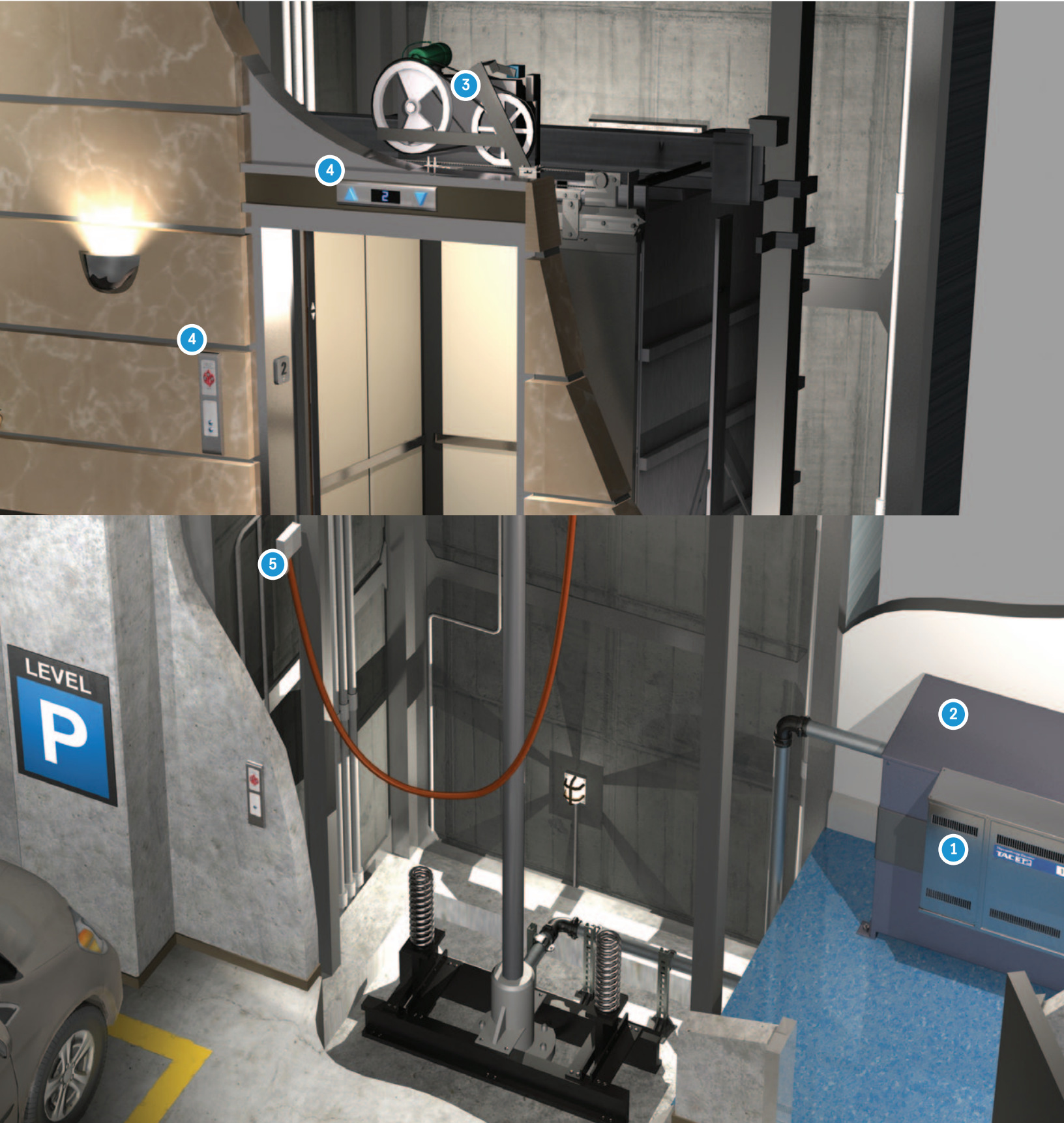
Fixtures

- (No. 4 Stainless Steel Finish)
- Car Operating Panel
- Digital PI
- ADA Compliant Hands Free Phone
- Emergency Light
- Fishtail Braille
- Code Compliant Signage
- Surface Mounted Hall Fixtures with Appendix "O" and Fire Service
- Surface Mounted Main Floor Digital PI
- Car Riding Lantern
- Hoistway Access Fixtures

Wiring Package

- Traveling Cable
- Hoistway Wiring
- Additional Components**
 - Car Top Railing
 - Car Top Exit Switches
- Power Unit (Optional)**
 - Submersible Design
 - Exclusive TKE I-2® Control Valve
 - Motor from 5 to 60 HP
 - Oil Flow Silencer

A High-Performance Hydraulic System.



Improved Capabilities. Increased Reliability. Accountability.



1 TAC32® Controller

Microprocessor-based system with diagnostic capabilities and easier troubleshooting than other control systems.



Non-Proprietary User-Interface Tools

User-friendly tool that allows unrestricted access for on-board adjusting and troubleshooting.



Battery Lowering Unit

Unit prevents entrapments and provides supplemental power to the controller in case of an outage. Also, the unit eliminates or reduces the need for a costly power generator.



Solid State Starter

Energy efficient motor starter that minimizes power surges with smooth, quiet and reliable operation.



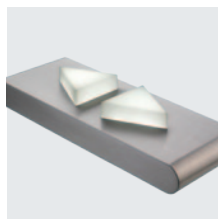
Elevator Positioning Encoder

Teflon-coated, perforated tape runs the length of the hoistway and digitally communicates the elevator's location, providing a safe and level landing for passengers when boarding and exiting.



3 Door Operator

Typically, the door operator causes the most trouble in a hydraulic system. Our on-board diagnostic service tool results in consistent operation and fewer shutdowns and service callbacks. A Linear Door Operator is also available on certain models.



4 New Fusion Fixtures

Stainless steel fixture line is in full compliance with U.S. and Canadian Fire Service Codes. Includes: the car operating panel, hall fixtures and car riding lanterns that improve the elevator appearance and functionality. They are also easy to install and do not damage the walls.



2 Power Unit (optional)

Power unit replacements enhance most hydraulic applications. This key component helps reduce noise and vibration during operation—allowing for a quiet and smooth ride. More compact in design, the unit uses less materials to construct and takes up less space which, in turn, allows for more efficient operations. Furthermore, this precise operation of the units increases leveling accuracy and improves passenger safety.



5 Wiring Package

This advanced traveling cable and hoistway wiring system utilizes CAN-BUS technology which allows communications with multiple devices through one wire to occur. Other advantages include: safe and efficient operations and maintenance, decreased installation times and troubleshooting, reduced use of wiring materials and other valuable resources, such as copper.

Control System

- TAC32 Controller
- Microprocessor-Based
- Simplex or Group Operations
- On-Board Diagnostics
- Solid State Starter
- Battery Lowering
- Tenant Security
- Front Openings Only
- Up to 6 Stops
- VISTA® Remote Monitoring System
- Local Code Compliance
- Limit Switches (If Required by Local Code)
- Leveling Accuracy: +/- 1/2 inch (13 mm)

- Power Supply: 200-208V, 220-240V, 460-480V, 575-600V, 50/60 Hz, AC

Speeds

- Up to 200 fpm (1 m/s)

Capacity

- 2100 to 5000 lbs. (953 to 2268 kg)

Travel

- Up to 60 feet (18m)

Tape Selector

- Elevator Position Digitally Communicated to TAC32 Controller
- Strong Spring Tensioning Device

Door Operator

- Closed-Loop Encoder Feedback
- On-Board Diagnostics
- MicroLight Electronic Door Detector

Fixtures

- Car Operating Panel
- Digital Position Indicator
- ADA Compliant Hands Free Phone
- Emergency Light
- Fishtail Braille
- Code Compliant Signage
- Surface Mounted Hall Fixtures with Appendix "O" and Fire Service

- Surface Mounted Main Floor Digital Position Indicator
- Car Riding Lantern
- Hoistway Access Fixtures

Wiring Package

- Traveling Cable
- Hoistway Wiring

Safety Components

- Car Top Railing
- Car Top Exit Switches

Power Unit (Optional)

- Submersible Design
- Exclusive TKE I-2® Control Valve
- Motor from 5 to 60 HP
- Oil Flow Silencer

ADVANCED TECHNOLOGY.
HIGH-LEVEL CONTROL.
PERFORMANCE EXCELLENCE.

The TAC32 is the controller of choice when it comes to hydraulic elevators. The system can adapt to meet the needs of any low-rise building. The powerful microprocessor administers data quickly and accurately. The TAC32 installation techniques minimize inconvenient downtimes and improves the overall performance of the equipment.



Style. Vision. Flexibility.

An elevator's fixtures are its most visible components. At ThyssenKrupp Elevator, we pay special attention to the overall design and functionality of these important elements. Our fixtures are sleek and sophisticated. Maintaining a balance between classic and contemporary, the HYpower Modernization fixtures are practical, functional and in full compliance with U.S. and Canadian Fire Service codes—offering Braille plates with durable and tactile markings that meet even the most stringent code requirements. Our surface mounted fixtures also make installation easy and quick—there is no disruption to the existing wall.

THYSSENKRUPP ELEVATOR'S HYPower STAINLESS STEEL FIXTURES INCLUDE:

1 Hall Fixtures

- Surface Mounted Hall Stations, integral with Appendix H/O signage and Fire Service features
- Surface Mounted Digital Main Floor Position Indicators and Hall Lantern
- Hoistway Access Key Switches

2 Car Riding Lantern

- This HYpower fixture is located on the elevator cab and offers convenience to riders to see what direction they are going.

3 Car Operating Panel

- Floor Buttons
- Digital Car Position Indicator
- Fishtail Braille
- ADA Compliant Hands Free Phone
- Code Required Key Switches
- Code Required Signage

ThyssenKrupp Elevator Locations

UNITED STATES OFFICES

Alabama				Louisiana		Nevada		Oregon			
Birmingham	205-945-0062	Miami	306-592-7722	Baton Rouge	225-928-1120	Las Vegas	702-262-6775	Eugene	541-683-7848	San Antonio	210-495-8585
Alaska		Orlando	407-425-3496	New Orleans	504-733-6141	Reno	775-329-0400	Portland	503-255-0079	Temple	254-778-3741
Anchorage	907-522-3002	Pensacola		Maine		New Hampshire		Pennsylvania		Tyler	903-533-8844
Arizona		Mobile Area	850-477-0015	Brewer	207-989-3255	STANLEY ELEVATOR CO., INC.		Allentown	610-366-0161	Utah	
Phoenix	602-257-0216	West Palm Beach	561-842-5761	Maryland		Merrimack		King of Prussia	609-567-2333	Salt Lake City	801-908-7433
Tucson	520-622-2452	Sarasota/Bradenton	941-753-4787	Baltimore	410-636-3280	Nashua	603-882-6918	Philadelphia	215-405-2340	Vermont	
Arkansas		Tallahassee	850-576-0161	College Park	301-345-6400	New Jersey		Pittsburgh	412-367-7500	BAY STATE ELEVATOR CO., INC.	
Little Rock	501-407-9030	Tampa	813-287-1744	Hagerstown	301-739-1314	Cranford	908-497-9297	York	717-767-5600	Burlington	802-879-1749
California		Vero Beach	772-567-0001	Ocean City	410-520-0022	New Mexico		Puerto Rico		Virginia	
Anaheim	714-939-0888	Georgia		Massachusetts		Albuquerque	505-856-5800	Puerto Rico	787-708-5605	Newington	571-642-0530
Fresno	559-271-1238	Atlanta	770-916-0555	THYSSENKRUPP ELEVATOR		New York		Rhode Island		Norfolk	757-547-9025
Hayward	510-476-1900	Macon	478-475-5438	Boston	617-547-9000	THYSSENKRUPP ELEVATOR		Providence	401-231-7718	Richmond	804-355-9792
Los Angeles	323-278-9888	Savannah	912-354-8800	BAY STATE ELEVATOR CO., INC.		Buffalo	716-681-7900	South Carolina		Roanoke	540-563-5700
Sacramento	916-376-8700	Hawaii		Agawam	413-786-7000	Elmsford	914-347-3450	Columbia	803-798-3895	Washington	
San Diego	619-596-7220	Honolulu	808-834-6300	Dalton	413-684-3225	Long Island	631-491-3111	Greenville	864-675-0096	Everett	425-438-0309
San Francisco	415-544-8150	Idaho		Worcester	508-754-4614	Manhattan	212-947-8800	Myrtle Beach	843-448-2016	Seattle	425-702-1200
San Jose	408-392-0910	Boise	208-658-0000	Michigan		Rochester	585-359-9290	South Dakota		Spokane	509-533-2701
Santa Barbara	805-967-0131	Illinois		Grand Rapids	616-942-4710	Syracuse	315-437-7541	Sioux Falls	605-332-4950	Tacoma	253-566-1751
Colorado		Chicago	630-652-4000	Detroit	734-953-3734	BAY STATE ELEVATOR		Tennessee		West Virginia	
Colorado Springs	719-548-0211	Peoria	309-691-2596	Minnesota		Albany	518-463-6363	THYSSENKRUPP ELEVATOR		Charleston	304-342-8115
Denver	303-790-8566	Indiana		Duluth	218-624-5566	North Carolina		Chattanooga	423-499-2216	Wisconsin	
Eagle	970-328-5955	Evansville	812-475-9419	Minneapolis	612-588-7844	Charlotte	704-529-1000	Knoxville	865-588-8517	BRAUN THYSSENKRUPP	
Fort Collins	970-221-1744	Indianapolis	317-595-1125	Mississippi		Greensboro	336-272-4563	Memphis	901-377-1993	ELEVATOR	
Connecticut		Jackson	601-922-9400	Missouri		Raleigh	919-851-8557	NASHVILLE MACHINE CO., INC.		Falls	262-703-0500
THYSSENKRUPP ELEVATOR		Iowa		Springfield	417-581-9466	North Dakota		Nashville	615-256-5251	Madison	608-221-4400
New Haven	860-828-6672	O'KEEFE ELEVATOR CO., INC.		St. Louis	314-991-0080	Fargo	701-232-2673	Texas		For a complete list of all the state licensing contractor numbers, please visit www.thysсенkruppelevator.com	
BAY STATE ELEVATOR CO., INC.		Des Moines		Montana		Ohio		Austin	512-447-9511		
Bloomfield	860-243-9030	515-283-2471		Montana	406-587-3895	Cincinnati	513-241-6000	Corpus Christi	361-299-0033		
Florida		Kansas City	913-888-8046	Nebraska		Cleveland	440-717-0080	Dallas Central	972-785-0505		
Ft. Myers	239-334-2511	Wichita	316-529-2233	O'KEEFE ELEVATOR CO.		Columbus	614-895-8930	El Paso	915-595-0171		
Gainesville	352-376-2241	Kentucky		Omaha	402-345-4056	Toledo	419-666-3304	Ft. Worth	817-922-9590		
Jacksonville	904-260-4656	Lexington	859-252-0386	Oklahoma		Oklahoma City		Houston	713-849-2191		
		Louisville	502-493-9977	Omaha		Tulsa	918-665-2040	Houston			
								Downtown	713-654-7700		
								Midland	432-683-1488		

CANADA OFFICES

Alberta	Manitoba	Ontario	Quebec
Calgary	Winnipeg	Hamilton	ASCENSEURS THYSSENKRUPP
Edmonton		Kingston	Montreal
	Newfoundland	London	Quebec City
British Columbia	St. Johns	Mississauga	
Kelowna		North York	Saskatchewan
Vancouver	Nova Scotia	Ottawa	Regina
Victoria	Halifax	Scarborough	Saskatoon
		Sudbury	
		Toronto	
		Whitby	

For a complete list of all the
state licensing contractor
numbers, please visit
www.thyssenkruppelevator.com

ThyssenKrupp Elevator

P.O. Box 2177, Memphis, TN 38101

Phone (877) 230-0303

thyssenkruppelevator.com | version 04.12

All illustrations and specifications are based on information in effect at time of publication approval. ThyssenKrupp Elevator reserves the right to change specifications or design and to discontinue items without prior notice or obligation. Copyright © 2012 ThyssenKrupp Elevator Corporation. CA License #651371

